

CURRENT NEWS



Natural Systems Design + Coastal Geologic Services

May, 2024

WELCOME TO OUR CURRENTS

Currently, at NSD + CGS...



- AWARDS
- BLOG
- CONFERENCES
- CULTURE
- FAVORITE DAY
- LOCATION SPOTLIGHT
- PEOPLE
- PLAY
- PRESS
- PUBLICATIONS
- SPEAKER SERIES

AWARDS

AMERICAN COUNCIL OF ENGINEERING COMPANIES - ACEC WA

Little Squalicum Estuary



The project received a Best in State Silver Award from the American Council of Engineering Companies (ACEC WA) at the Engineering Excellence Awards ceremony in February 2024.



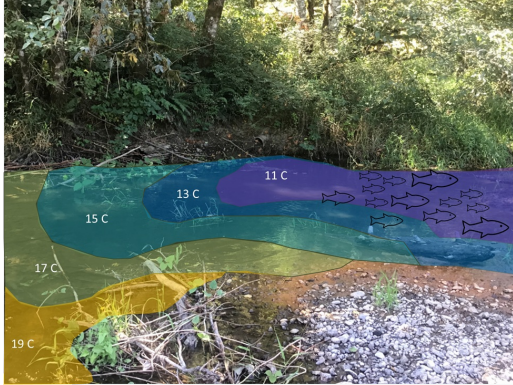
JIM JOHANNESSEN

[VIEW GALA PICS](#)

BLOG

Protecting Thermal Refuges for Coldwater Fish in the PNW

By Davey French, April 2024



[READ BLOG POST](#)

CONFERENCES



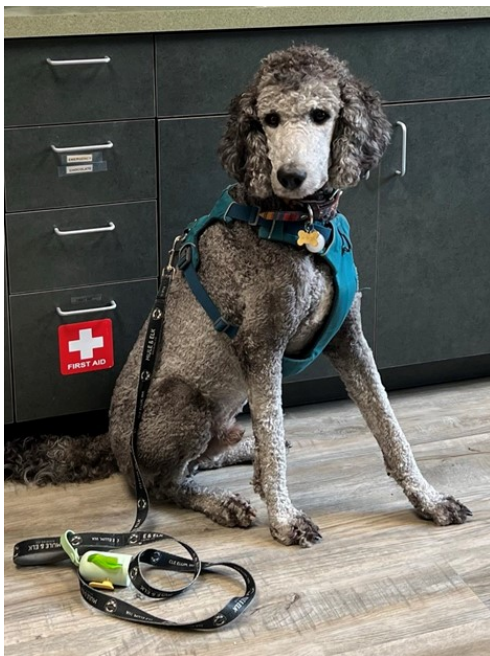
It was a great experience for our *President*, and *Principal River Engineer*, **Leif Embertson**, at the **American Rivers Lobby Days**, meeting with Pacific Northwest congressional and senate leaders on the importance of hydropower reform, Columbia River restoration appropriations, and FEMA policy.

[READ MORE](#)

CULTURE

We take our culture very seriously here at NSD + CGS.

This year we created a 2024 Culture Action Plan workgroup. We look forward to providing you with updates on our goals and results as the year progresses.



KILGORE FRENCH

The picture on the left, featuring **Kilgore French**, represents a few of our favorite values, not necessarily in this order:

1. Emergency Chocolate
2. Safety
3. Dogs
4. Gathering where there is food



DAVEY FRENCH

FAVORITE DAY OF THE QUARTER

World Wetlands Day - February 02, 2024



TORREY LUITING

Associate Principal Ecologist

We love that there is an official **World Wetlands Day!**

Please enjoy this wetlands photo taken in November of 2021 of the Middle Fork Hoquiam River. (Sitka spruce swamp.)

Photo Credit: Torrey Luiting

LOCATION SPOTLIGHT

The Port Angeles Team has a New Office Space!



2032 South O Street | Port Angeles, WA



Tim Abbe, Aaron Lee and Olivia Vito



[VIEW NEW OFFICE PICS](#)

PEOPLE

Promotions!



NIC TRUSCOTT

Associate Principal



MATT TIEDEMANN

Senior Engineer



OLIVIA VITO

Project Scientist

Welcome New Employee!

Meet Lillie Haddock

Staff Engineer

Lillie is our new staff engineer with an interdisciplinary background in water resources engineering, environmental science, and water quality research.

Coming from Arkansas, she is excited to familiarize herself with Washington's waterways and to be supporting the engineering design and analysis of stream, river, and wetland restoration projects around the state.

We are so proud to welcome Lillie to our

team!



Congratulations New Shareholders!



LISA REMLINGER

Operations Director



MEGAN NELSON

Associate Principal Engineer

PLAY

Ski Weekend Success!



POWDER PLAY DAY PICS

PRESS

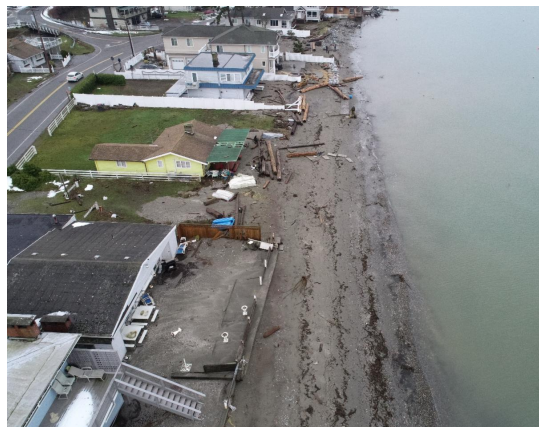
Prioritizing Sea Level Rise Vulnerability Across Puget Sound

By Avery Maverick, December 2024



AVERY MAVERICK

Project Scientist, Coastal Geologist



Homes along Birch Bay after a January 2022 storm event.

Photo credit: Jim Johannessen

READ
HERE

Natural Systems Design Acquires Coastal Geologic Services



ENVIRONMENTAL BUSINESS JOURNAL

Volume XXXVI, Numbers 11/12, 2023
Mergers & Acquisitions

READ
HERE

PUBLICATIONS

Proactive river corridor definition:
Recommendations for a process-
based width optimization
approach illustrated in the context
of the coastal Pacific Northwest

NSD + CGS:

- Tim Abbe (pictured on the right)

Northwest Hydraulic Consultants:

- Andrew D. Nelson
- Vaughn D. Collins
- Jeremy S. Payne



SPEAKER SERIES

ELLEN WOHL

"MESSY RIVERS ARE HEALTHY RIVERS: THE ROLE OF SPATIAL HETEROGENEITY IN SUSTAINING RIVER ECOSYSTEMS"

You are invited to join us on January 31st @ 12 pm to 1 pm PST, for a presentation by Dr. Ellen Wohl.

Ellen Wohl received a BS in geology from Arizona State University and a PhD in geosciences from the University of Arizona. She is a professor in the Department of Geosciences at Colorado State University and a University Distinguished Professor. Her research focuses on physical processes and forms in river channels and floodplains, and how these interact with biogeochemistry and ecological and human communities. She has conducted field research in diverse environments around the world.

Perceptions of river health are strongly influenced by expectations regarding a natural river. Many observers expect clear water, a slightly sinuous river with pools and riffles, and some riparian trees. River health, however, is much more complicated and multifaceted. The physical appearance of a river, for example, depends strongly on geomorphic context and river history.



Dr. Ellen Wohl
Department of
Geosciences,
Colorado State
University
Wednesday,
January 31
12 pm to 1 pm PST

Come Ride the Currents With Us!



Location: Upper Wenatchee River

Client: Chelan County Natural Resource Department

Construction Slated for: Summer of 2024

Year of Photo Taken: 2022

Photo Credit: Nic Truscott, Associate Principal

How Can We Help?



CONNECT WITH US

2024 All rights reserved by Natural Systems Design + Coastal Geologic Services.

Natural System Design, Inc. | 1900 N. Northlake Way, Suite 211, Seattle, WA 98103

[Unsubscribe marketing@naturaldes.com](mailto:marketing@naturaldes.com)

[Update Profile](#) | [Constant Contact Data Notice](#)

Sent by marketing@naturalsystemsdesign.ccsend.com powered by



Try email marketing for free today!